

# Kodak Scan Station 500

Connectivity	10/100 Base T and built-in 56K Fax Modem, no host PC required
Output Methods	Scan to network share, scan to print, scan to e-mail, scan to fax, scan to portable USB drive, scan to FTP (anonymous, authenticated, with proxy support)
Network Protocols	TCP/IP, SMB, authenticated SMTP (login, plain text, CRAM, NTLM), DHCP (or static), NT domain authentication
Security Features	PDF private key encryption, optional password access, option to enable/disable the ability to scan to portable USB drives, secure login via LDAP, activity logging by Login ID
File Format Outputs	Single and multipage TIFF, JPEG, PDF, text searchable PDF, encrypted PDF, optional JPEG compressed TIFF, WAV audio files
Control Panel	20.3 cm (8 in.) 800x480 TFT LCD with touchscreen
Audio	Built-in microphone and speaker to record and play back Voice Attachment messages
On-board Processor, Memory, Hard Drive	<b>Intel Atom</b> Processor, 1 GB RAM, 160 GB hard drive
Scanning Technology	Duplex scanning with dual color quadlinear CCD, 600 dpi optical resolution, capture bit depth is 30 bits (10 x 3), color output bit depth is 24 bits (8 x 3), grayscale output bit depth is 256 levels (8-bit)
Output Resolution	75, 100, 150, 200, 240, 300, 400, 600 dpi; 1200 dpi with flatbed accessory
Imaging Features	Perfect Page Scanning, deskew, autocrop, content-based blank page removal
Throughput Speeds (portrait, letter size)	Black-and-white/grayscale/color: up to 30 ppm/60 ipm at 200 dpi
Multi-Feed Detection	With ultrasonic technology
Feeder	Up to 75 sheets of 75 g/m <sup>2</sup> (20 lb.) paper
Maximum Document Size	215 mm x 863 mm (8.5 in. x 34 in.)- may be restricted at certain resolutions
Minimum Document Size	50 mm x 63.5 mm (2 in. x 2.5 in.); Multiple-sheet feeding: 75 mm x 125 mm (3 in. x 5 in.)
Paper Thickness and Weight	52-413 g/m <sup>2</sup> (110 lb.) paper and ID cards up to 1.25 mm (0.05 in.) thick
Recommended Daily Volume	Up to 1,500 pages per day
Approvals and Product Certifications	AS/NZS 3548 Class A (C-Tick Mark), CAN/CSA-C22.2 No. 60950-1 (TUV C Mark), Canada ICES-003 Issue 3 (Class A), GB4943, GB9254 (Class A), GB 17625.1 Harmonics (CCC "S&E" Mark), EN 55022 ITE Emissions (Class A), EN 61000-3-3 Flicker, EN 55024 ITE Immunity (CE Mark), EN 60950 (TUV GS Mark), IEC 60950-1, CISPR 22 Class A, VCCI (Class A), CNS 13438 (Class A), CNS 14336 (BSMI Mark), UL 60950-1 (TUV US Mark), CFR 47 Part 15 Subpart B (FCC Class A), Argentina S-Mark
Dimensions	Weight: 10.5 kg (23 lbs.); Depth 38.1 cm (15 in.); Width: 34.9 cm (13.8 in.); Height: 20.8 cm (8.2 in.)
What's in the Box	<b>Kodak</b> Scan Station 500, power cords, User's Guide, Setup & Documentation CD-ROMs, Quick Install Guide, one portable USB drive, configuration organizer software
Accessories Available	Portable USB drives, <b>Kodak</b> Scan Station 500 Keyboard and Stand Accessory, <b>Kodak</b> A3 Flatbed Accessory, <b>Kodak</b> A4 Flatbed Accessory
Consumables Available	Feed modules, roller cleaning pads, <b>Staticide</b> Wipes
Software Available	<b>NSi AutoStore</b> Client enabled
Warranty	12 months return to base
Recommended portable USB drive specs	USB 2.0, minimum size for configuration: 32 MB, minimum size for storing images/files: 128 MB
Environmental Factors	Operating temperature: 10-35° C (50-95° F); Operating humidity: 10% to 85% RH, Altitude <2000M or 6562 Feet
Illumination	Dual Fluorescent (Cold Cathode)
Power Consumption	Standby: <6 Watts; Operating: <95 Watts
Interfaces	On rear panel: four USB 2.0 ports, one RJ45 10/100 Base T Ethernet port, one custom flatbed port and one RJ11 telephone jack On bezel: one USB 2.0 port



**Kodak**  
Service & Support

Contact **Kodak** at:  
 Australia 1800-895-747  
 Beijing +86-10-6561-6561  
 Guangzhou +86-20-8666-9888  
 Hong Kong +852-2564-9333  
 India +91-22-6641-6380  
 Indonesia 001-80-3657-962  
 Japan +81-3-5577-1300  
 Malaysia, Philippines 00-800-8856-3251

Singapore, Thailand 001-800-8856-3251  
 New Zealand 0800-256-325 (0800 2 KODAK)  
 Shanghai +86-21-5884-1818  
 Shenzhen +86-755-8835-2068  
 South Korea +82-2-3143-0981  
 Taiwan +886-2-8751-8558  
 Vietnam 1206-5106

To learn more:  
[www.kodak.com/go/getyourScanStation](http://www.kodak.com/go/getyourScanStation)  
 Printed using **Kodak** Technology.

©Kodak, 2009. Kodak is a trademark.

Subject to technical change without notice.

A-5805 CAT No. 813 5501



It's time for you **AND** Kodak

WE DIDN'T BUILD IT TO KEEP YOUR BUSINESS COMPETITIVE.

# WE BUILT IT TO PUT YOU IN THE LEAD.



**Kodak**  
Scan Station 500

**Add performance and power—in a small package—to your business.**

Getting documents into the workflow fast is essential. Helping your business do more with those documents is even more important. That's why we built the **Kodak Scan Station 500**. It's a network scanning device loaded with smart features that make it easy to integrate, scan, and share.



E-mail



Fax



Network



Printer



Flash drive



FTP

# The smart, fast, easy, friendly, quiet, secure Kodak Scan Station 500.

## BUILT WITH A PURPOSE.

### Send information. Not just data.

Our exclusive Voice Attachment feature gives you the option to record and send essential directions with your documents.

### Make sure everyone gets the message.

With one scan, send a document to the network, to e-mail, to the printer, to fax, to a USB drive, and to FTP—simultaneously!

### Built to be Faster:

- Up to 9X faster than the competition (200 dpi, color duplex mode)
- Scan up to 1,500 pages per day
- Robust and versatile paper handling
- Feeder tray accommodates up to 75 pages
- Single-pass, double-sided scanning saves time

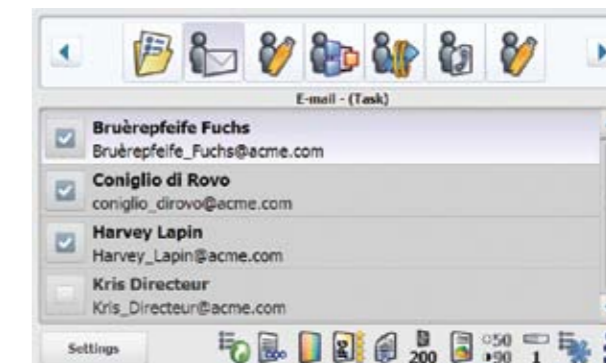
### Built to be Secure:

- Enable or disable scanning to portable flash drives
- User Authentication based upon standard **Windows OS** authentication
- Transaction log tracks all usage
- PDF private key encryption
- Secure login via LDAP

### Built to be Easy to Use:

- Intuitive touchscreen operation
- Blank Page Removal instantly reduces file size
- Frequent job settings can be programmed for timesaving convenience
- Easy to configure remotely

- Kodak's Perfect Page Scanning for great image quality—automatically
- LDAP address lookup is compatible with your company directory
- Files can be named according to your company standards



The large 20.3 cm (8 in.) LCD touchscreen makes it easy for everyone to scan and share.

### Built to be Office Friendly:

- Whisper-quiet operation
- Integrated fax/modem—no need for a separate fax machine
- Scan and send with one device—no additional hardware or software required
- Ergonomically correct for standing or seated operation
- Ideal for walk-up or dedicated use

### Built to Inspire Confidence:

The award-winning **Kodak Service & Support** professionals are always here to help keep your business running smoothly.



The Kodak Scan Station 500 delivers high performance in a space-saving footprint.